



IN CASE OF STOPPAGE

CHECK MOTOR — If it hums but the machine fails to operate, check the shuttle race (track the bobbin rotates on), it may be clogged with lint or loose threads — clean it as per diagram below. Also check the needle — if it's bent or broken, replace it. If the motor fails to hum, examine the cord, plug and electrical outlet — be sure they are in good working condition. Re-check the section on Adjustments in your regular instruction booklet.

To Open the Shuttle Race (see Fig. 1)

To ensure the best results with your sewing machine, it is desirable that the shuttle race be cleaned out from time to time. Moreover it will sometimes be necessary to open the shuttle in order to eject loose pieces of thread that have been caught in the hook.

To open the shuttle race, first raise the needle bar to its highest point, and remove the bobbin case.

Next, twist the shuttle race spring screw anti-clockwise until it can be drawn out of the shuttle.

The shuttle race spring will then swing down on its hinges, enabling you to remove the

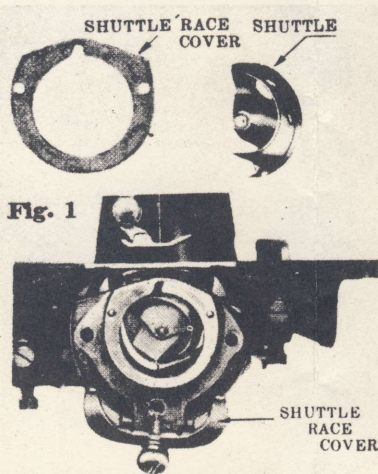


Fig. 1

shuttle race ring completely and to detach the shuttle hook inside.

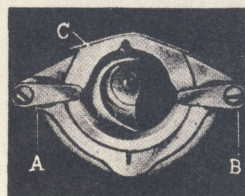


Fig. 2

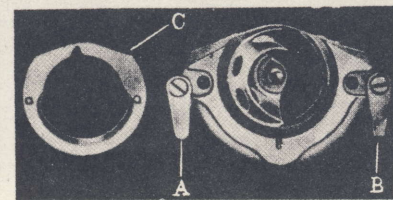
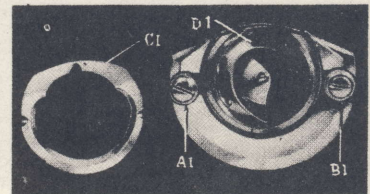
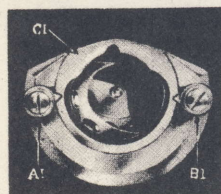


Fig. 3



Pull and move the latches down (A1, B1.) and remove the ring (C1) and shuttle (D1). Wipe all parts clean and re-oil and replace.

THIS MACHINE HAS BEEN TESTED AND CHECKED -- TWICE

FIRST at the factory before shipment to our plant and **SECOND** by our Quality Control section before delivery to you. It has been put through a thorough performance test. This test has shown all controls to be properly adjusted and all moving parts operating satisfactorily.

ONCE SET, most controls of this machine are not likely to get out of adjustment. Occasionally, however, a

ONCE SET, most controls of this machine are not likely to get out of adjustment. Occasionally, however, a few stoppages are likely to occur. See above. Do not continue sewing; determine the cause of the stoppage and correct immediately.

BEFORE actually sewing, however, we suggest that you check the section on Adjustments in your regular instruction booklet. If any controls have been thrown out of adjustment or loosened in transit, follow the recommendations made in this section: they will help you get a good start toward trouble-free productive sewing.

CHECK THREAD BREAKAGE — It's caused by incorrect threading of either needle or bobbin; clogged stitch-forming mechanism; thread tension too tight; incorrect size needle for the thread being used; bent or blunt needles; old or dried-out thread; needle with rough edge.

CHECK STITCH-SKIPPING — It's caused by improper seating of the needle in the needle bar; bent, blunt or incorrect size needles (check Needle and Thread Size Chart).

CHECK THREAD USED — In Top Spool and Bobbin. To prevent faulty sewing or slippage, the thread in both the top spool and bobbin must be the same size and types. Don't mix sizes. Don't mix types. If you are using a **silk** thread in the bobbin, use a **silk** thread of the same size in the top spool, etc.

CHECK STITCH-FORMING MECHANISM — **Keep it clean!** This mechanism may become clogged from broken threads or accumulation of lint. If not cleaned it will lessen the efficiency of the machine. Check the regular instruction booklet on the **CLEANING OF STITCH-FORMING MECHANISM**.

CHECK BUNCHING OF MATERIAL — It's caused by improper pressure on the presser foot. Check the section on Adjustments — Regulating Pressure on Material. Remember — the heavier the material the heavier the pressure.

CAUTION -- PLAY SAFE

NEVER turn the hand wheel **away** from the operator.

NEVER run the machine with the presser foot in the down position unless material is between the presser foot and the feed teeth.

NEVER run the machine when it is fully threaded unless some material is between the presser foot and the feed teeth.

NEVER NEVER try to **help** the machine "feed". Never pull the material through the feed teeth. A bent or broken needle will result. The feed is entirely automatic.

NEVER operate the machine unless the bobbin case cover is closed.

NEVER over oil the motor or it will fail . . . 2 or 3 drops of light, sewing machine oil twice a year is sufficient lubrication for the motor.

NEVER use a needle or thread that is a wrong size for the material being sewn. Follow the Needle and Thread Size Chart in the regular instruction Booklet.

NEVER leave machine plugged into electrical outlet after you are through sewing.